



WISCONSIN PRESERVES WHERE OPDMDs ARE PERMITTED (WITH SOME RESTRICTIONS)

TABLE OF CONTENTS

ACCESS DESCRIPTIONS _____ **2**

CEDARBURG BOG _____ **2**

CENTRAL SANDS _____ **2**

DOOR PENINSULA _____ **2**

MILITARY RIDGE PRAIRIE HERITAGE AREA _____ **3**

MUKWONAGO RIVER WATERSHED _____ **3**

NORTHERN WISCONSIN _____ **4**

MAPS _____ **5**

Barneveld Prairie Map _____ **5**

Bass Lake Map _____ **6**

Catherine Wolter Wilderness Area Map _____ **7**

Caroline Lake Map _____ **8**

Cedarburg Bog Map _____ **9**

Central Sands Map – Beaver Tract _____ **10**

Central Sands Map – Buttercup Tract _____ **11**

Central Sands Map – Preston North Tract _____ **12**

Central Sands Map – Preston South Tract _____ **13**

Central Sands Map – Quincy Tract _____ **14**

Crooked Creek Map _____ **15**

Kangaroo Lake Map _____ **16**

Lulu Lake Map _____ **17**

Newell and Ann Meyer Nature Preserve Map _____ **18**

Mink River Map _____ **19**

Page Creek Marsh Map _____ **20**

Pickerel Lake Fen Map _____ **21**

Summerton Bog Map _____ **22**

Thomson Memorial Prairie Map _____ **23**

ACCESS DESCRIPTIONS

CEDARBURG BOG

Cedarburg Bog - Ozaukee County ([Cedarburg Bog Map](#))

- Use is permitted on all roads where motorized vehicles are permitted.
- Many of these are grassed lanes or two-track dirt roads, but not all OPDMDs would work on some portions of the roads.

CENTRAL SANDS

Central Sands Forest and Barrens ([Beaver Tract Map](#), [Buttercup Tract Map](#), [Preston North Tract Map](#), [Preston South Tract Map](#), [Quincy Tract Map](#))

- OPDMDs are permitted on established forestry roads. Off-trail use is restricted to foot traffic only.
- Property gates are locked with a combination lock. ADA visitors who would like access may call 608-316-6444 during regular business hours to request the combination of the gate.
- If trail conditions are such that rutting or soil disturbance might occur, operator should refrain from use until conditions improve.

Page Creek Marsh ([Page Creek Map](#))

- OPDMDs shall be permitted on the existing established road that starts at N3444 on Hwy K and goes to into the preserve.
- OPDMDs are prohibited on temporary fire breaks and foot trails.
- The preserve gate is locked with a combination lock. ADA visitors who would like access may call the local project office, 608-251-8140, during regular business hours to request the combination of the gate.

Summerton Bog ([Summerton Bog Map](#))

- OPDMD use is prohibited except for the short stretch of land that runs with the Gas company Right of Way.
- OPDMDs may use this short stretch, but it is only a few hundred yards before the property boundary. It would afford a hunting opportunity for an ADA user.

DOOR PENINSULA

Kangaroo Lake ([Kangaroo Lake Map](#))

- Allow OPDMDs up to three feet wide on the identified trail off of Highland Road at the Judy Abert Meissner Memorial Wetland Preserve.
- If trail conditions are such that rutting or soil disturbance might occur, operator will refrain from use until conditions improve.

Mink River Estuary ([Mink River Map](#))

- Allow OPDMDs up to 5 feet wide on the trail from the east parking lot to the river and from the Juice Mill entrance to the research station.
- A maximum speed of 5mph must be adhered to.
- If trail conditions are such that rutting or soil disturbance might occur, operator will refrain from use until conditions improve.
- ADA visitors who would like access may call the local project office, 920-743-8695, during regular business hours to request the gate lock combination, which changes periodically.

MILITARY RIDGE PRAIRIE HERITAGE AREA

Barneveld Prairie ([Barneveld Prairie Map](#))

- ATVs and UTVs are allowed on established farm lanes and maintained mowed path per map.
- If road conditions are such that damage or rutting will occur, operator will refrain from use until conditions improve.

Thomson Memorial Prairie ([Thomson Memorial Prairie Map](#))

- ATVs and UTVs are allowed on established farm lanes and maintained mowed path per map.
- If road conditions are such that damage or rutting will occur, operator will refrain from use until conditions improve.

MUKWONAGO RIVER WATERSHED

Crooked Creek Preserve ([Crooked Creek Map](#))

- OPDMDs shall be permitted on the main, gravel driveway.
- The trails drop steeply beyond the gravel driveway and are inaccessible to OPDMDs.
- ADA visitors who would like access may call the local project office, 262-642-7276, during regular business hours to request the combination of the gate and also condition of the trails.

Lulu Lake Preserve ([Lulu Lake Map](#))

- At the southern unit OPDMDs shall be permitted on the existing gravel road that starts at the preserve entrance on Nature Road and goes to the Mukwonago River lookout and to the lake. ADA visitors who would like access may call the local project office, 262-642-7276, during regular business hours to request the combination of the gate, which changes monthly, and also condition of the trails.
- At the northern unit, OPDMDs shall be permitted on the existing paved road that starts at the preserve entrance on Highway LO and goes to the turnaround inside the preserve.
- OPDMDs are prohibited on other maintenance roads, fire breaks, and foot trails.

Newell and Ann Meyer Nature Preserve ([Newell and Ann Meyer Nature Preserve Map](#))

- OPDMDs shall be permitted on the preserve driveway and established trails (the marked Priebe Family trail). Vehicles may drive on the driveway up to the buildings.
- OPDMDs are prohibited off the identified trails.
- On the trails, OPDMDs will be restricted to a maximum width of a standard ATV.
- ADA visitors who would like access may call the local project office, 262-642-7276, during regular business hours to request the combination of the gate and the condition of the trails.

Pickereel Lake Fen Preserve ([Pickereel Lake Fen Map](#))

- OPDMDs shall be permitted on existing gravel roads at the preserve.
- Conditions must be dry on the roads so as to not cause damage to roads.
- ADA visitors who would like access may call the local project office, 262-642-7276, during regular business hours to request the combination of the gate and also condition of the trails.

NORTHERN WISCONSIN

Bass Lake ([Bass Lake Map](#))

- OPDMDs may be used on the established forest woods road but not on foot trails or undeveloped areas of the property.

Caroline Lake ([Caroline Lake Map](#))

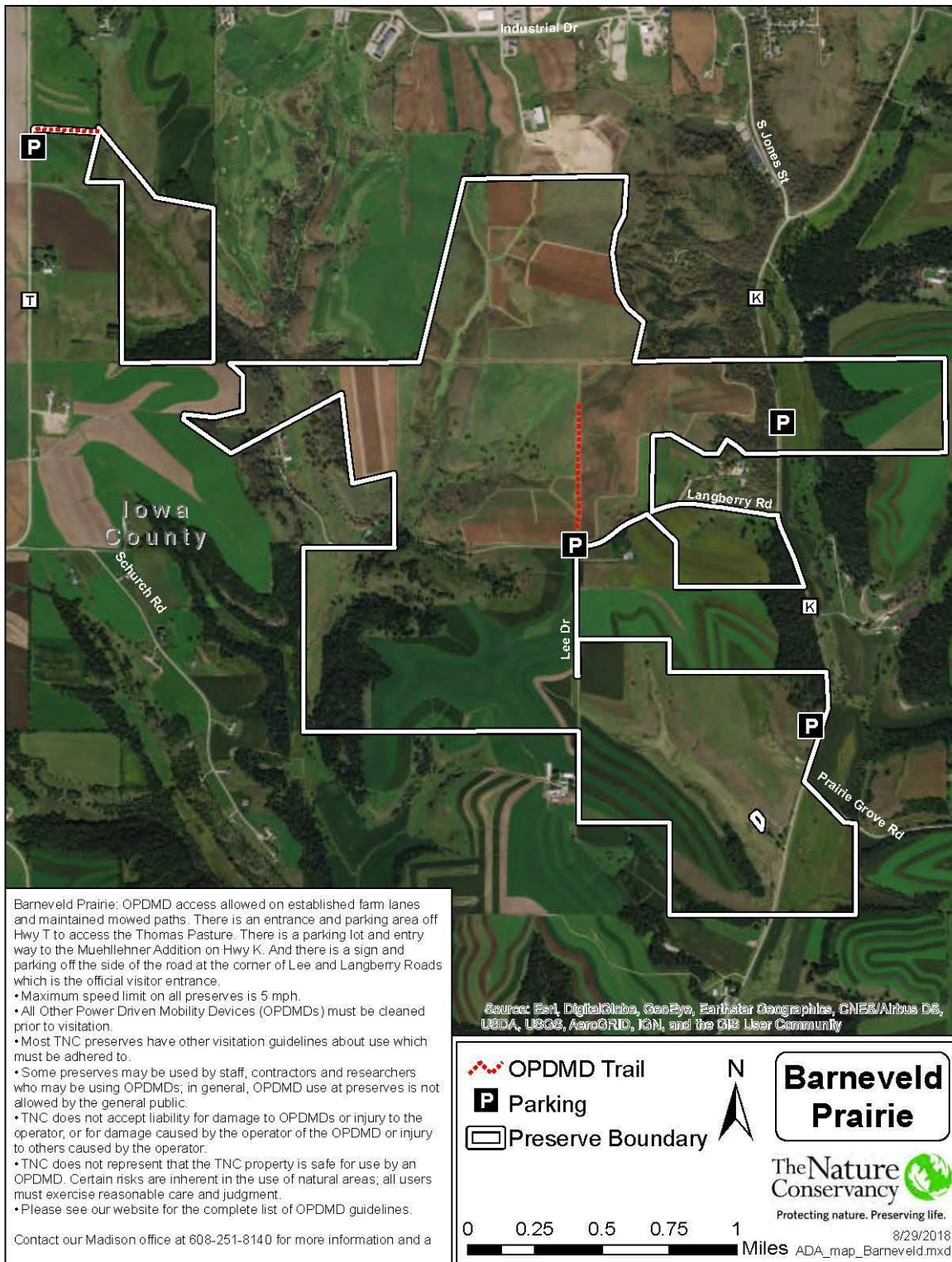
- OPDMDs shall be permitted on the public Caroline Lake Road, which goes through the property, and on Caroline Lake.
- Use of OPDMDs is prohibited on all trails and interior of preserve due to safety and environmental impacts of OPDMDs.

Catherine Wolter Wilderness Area ([Catherine Wolter Wilderness Area Map](#))

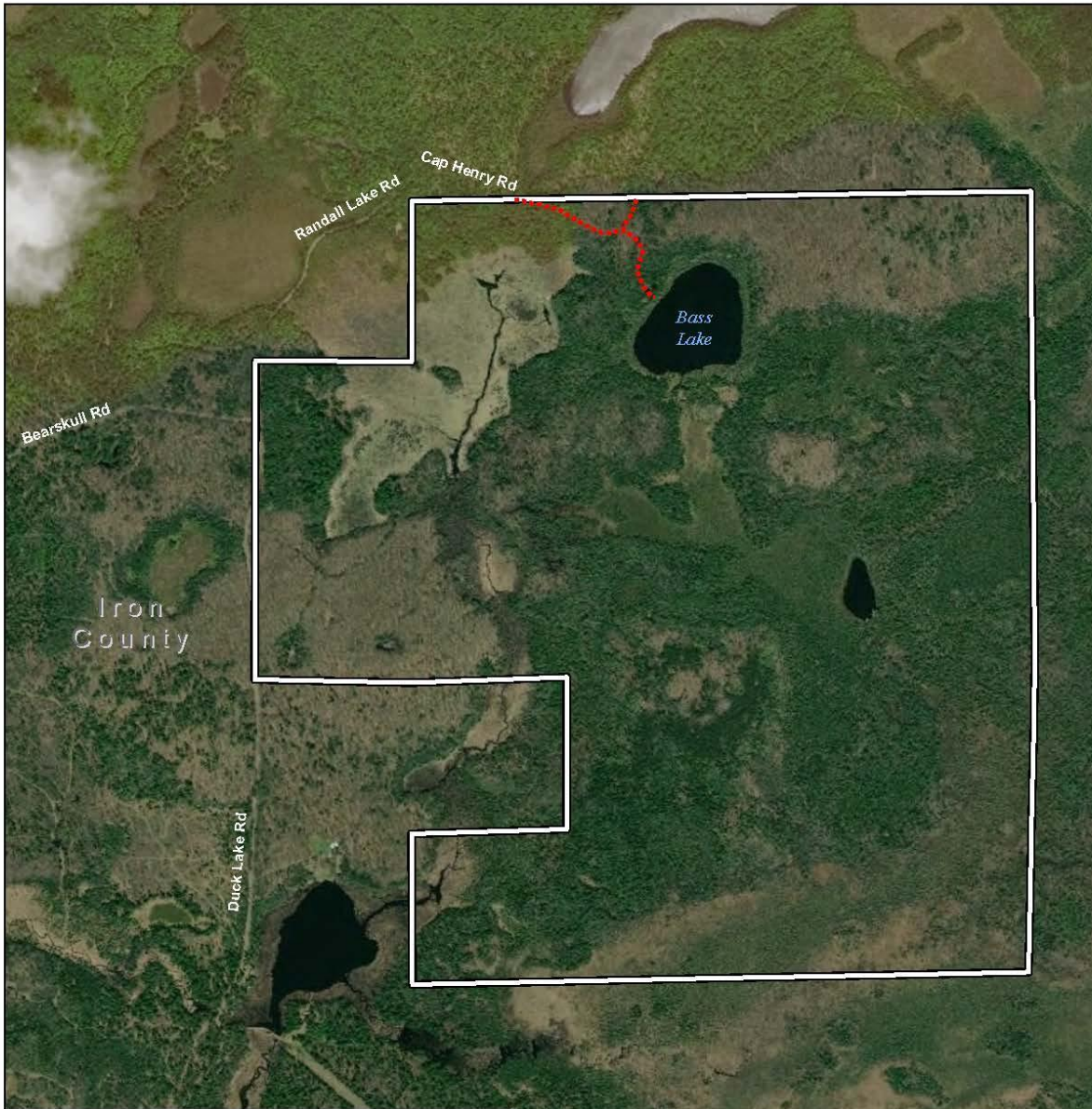
- OPDMD use is allowed on established old logging roads but prohibited in the undeveloped areas.
- The parking lot has a gated combination lock at the trail head. ADA visitors who would like access may call the local project office, 715-358-6305, during regular business hours to obtain the gate combination.

MAPS

Barneveld Prairie Map



Bass Lake Map



Bass Lake: OPDMD's may be used on the established forest woods road/preserve access trail. Parking is the driveway at the end of Randall Lake Road.

- Maximum speed limit on all preserves is 5 mph.
- All Other Power Driven Mobility Devices (OPDMDs) must be deaned prior to visitation.
- Most TNC preserves have other visitation guidelines about use.
- Some preserves may be used by staff, contractors and researchers who may be using OPDMDs; in general, OPDMD use at preserves is not allowed by the general public.
- TNC does not accept liability for damage to OPDMDs or injury to the operator, or for damage caused by the operator of the OPDMD or injury to others caused by the operator.
- TNC does not represent that the TNC property is safe for use by an OPDMD. Certain risks are inherent in the use of natural areas; all users must exercise reasonable care and judgment.
- Please see our website for the complete list of OPDMD guidelines.

Contact our Northwoods office at 715-388-7171 for more information.

Clifford F. Messinger Bass Lake Preserve

Source: Esri, DigitalGlobe, USDA, USGS, AeroG

- OPDMD Trail
- Parking
- Preserve Boundary

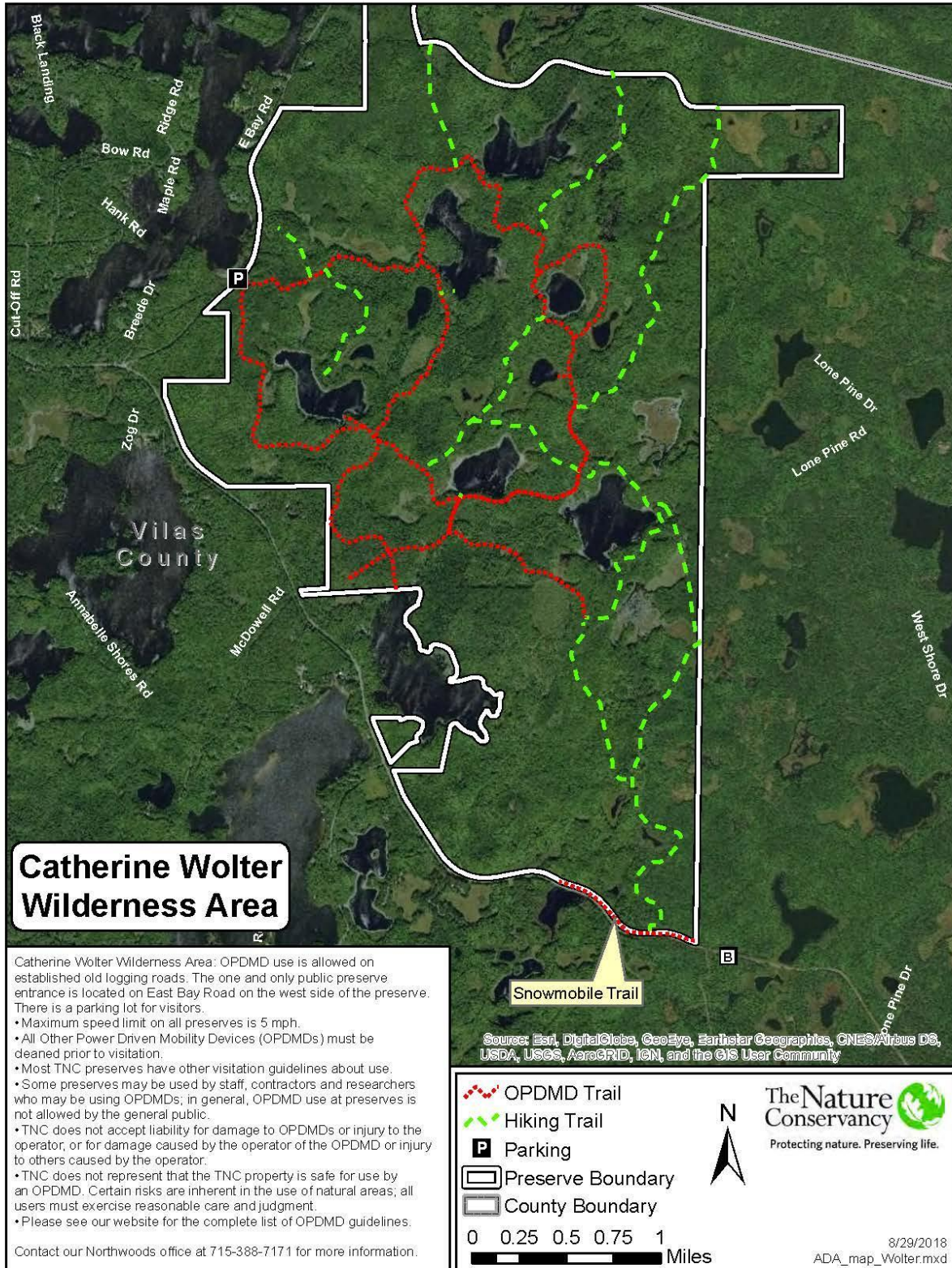
N

The Nature Conservancy
Protecting nature. Preserving life.

0 0.1 0.2 0.3 0.4 0.5 Miles

8/29/2018
ADA_map_BassLake.mxd

Catherine Wolter Wilderness Area Map



Catherine Wolter Wilderness Area

Catherine Wolter Wilderness Area: OPDMD use is allowed on established old logging roads. The one and only public preserve entrance is located on East Bay Road on the west side of the preserve. There is a parking lot for visitors.

- Maximum speed limit on all preserves is 5 mph.
- All Other Power Driven Mobility Devices (OPDMDs) must be deaned prior to visitation.
- Most TNC preserves have other visitation guidelines about use.
- Some preserves may be used by staff, contractors and researchers who may be using OPDMDs; in general, OPDMD use at preserves is not allowed by the general public.
- TNC does not accept liability for damage to OPDMDs or injury to the operator, or for damage caused by the operator of the OPDMD or injury to others caused by the operator.
- TNC does not represent that the TNC property is safe for use by an OPDMD. Certain risks are inherent in the use of natural areas; all users must exercise reasonable care and judgment.
- Please see our website for the complete list of OPDMD guidelines.

Contact our Northwoods office at 715-388-7171 for more information.

Sources: Esri, DigitalGlobe, GeoEye, Earthstar Geographics, CNES/Airbus DS, USDA, USGS, AeroGRID, IGN, and the GIS User Community

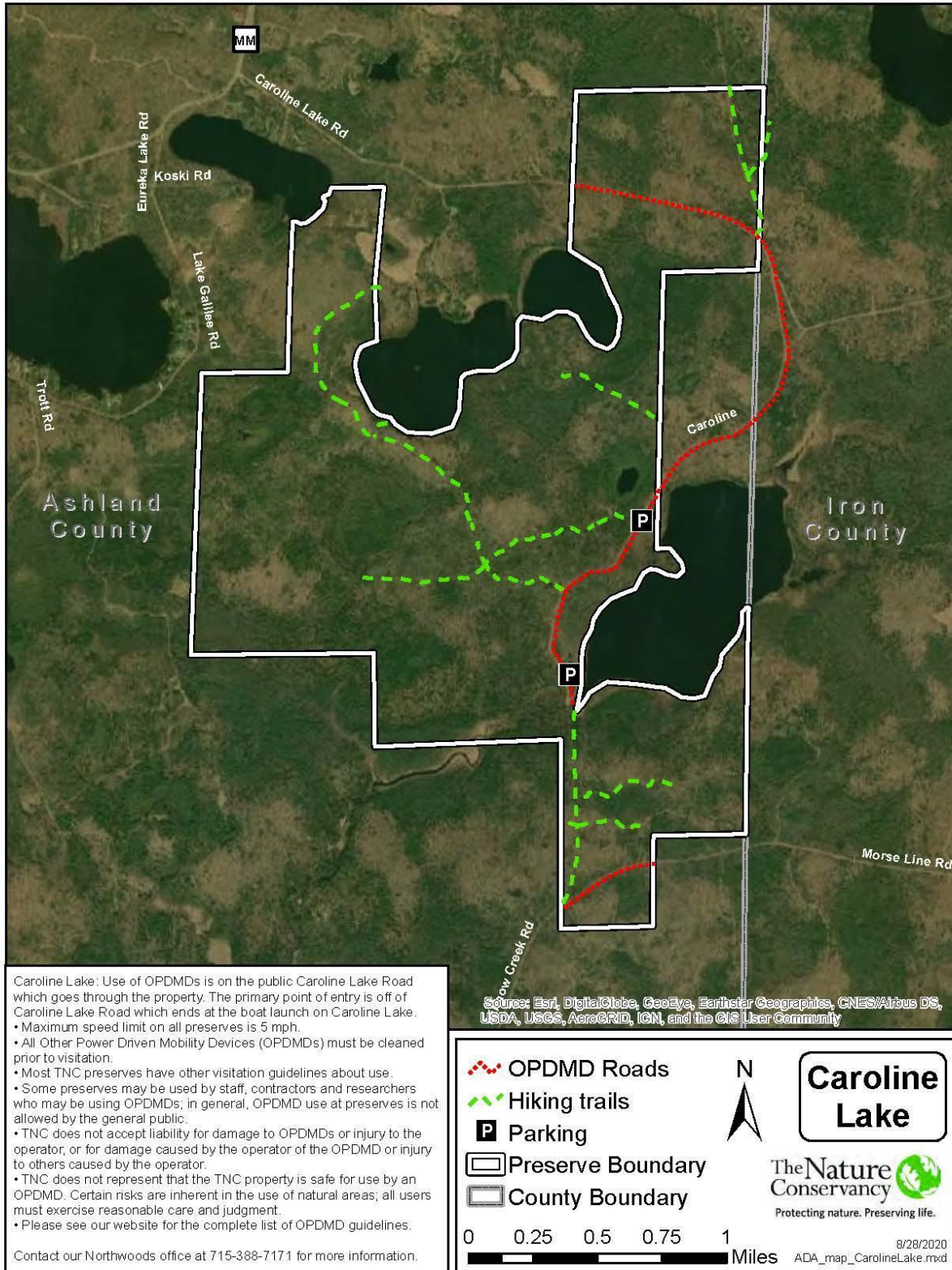
The Nature Conservancy
Protecting nature. Preserving life.

Legend:
 - OPDMD Trail (Red dotted line)
 - Hiking Trail (Green dashed line)
 - Parking (P)
 - Preserve Boundary (White outline)
 - County Boundary (Grey outline)

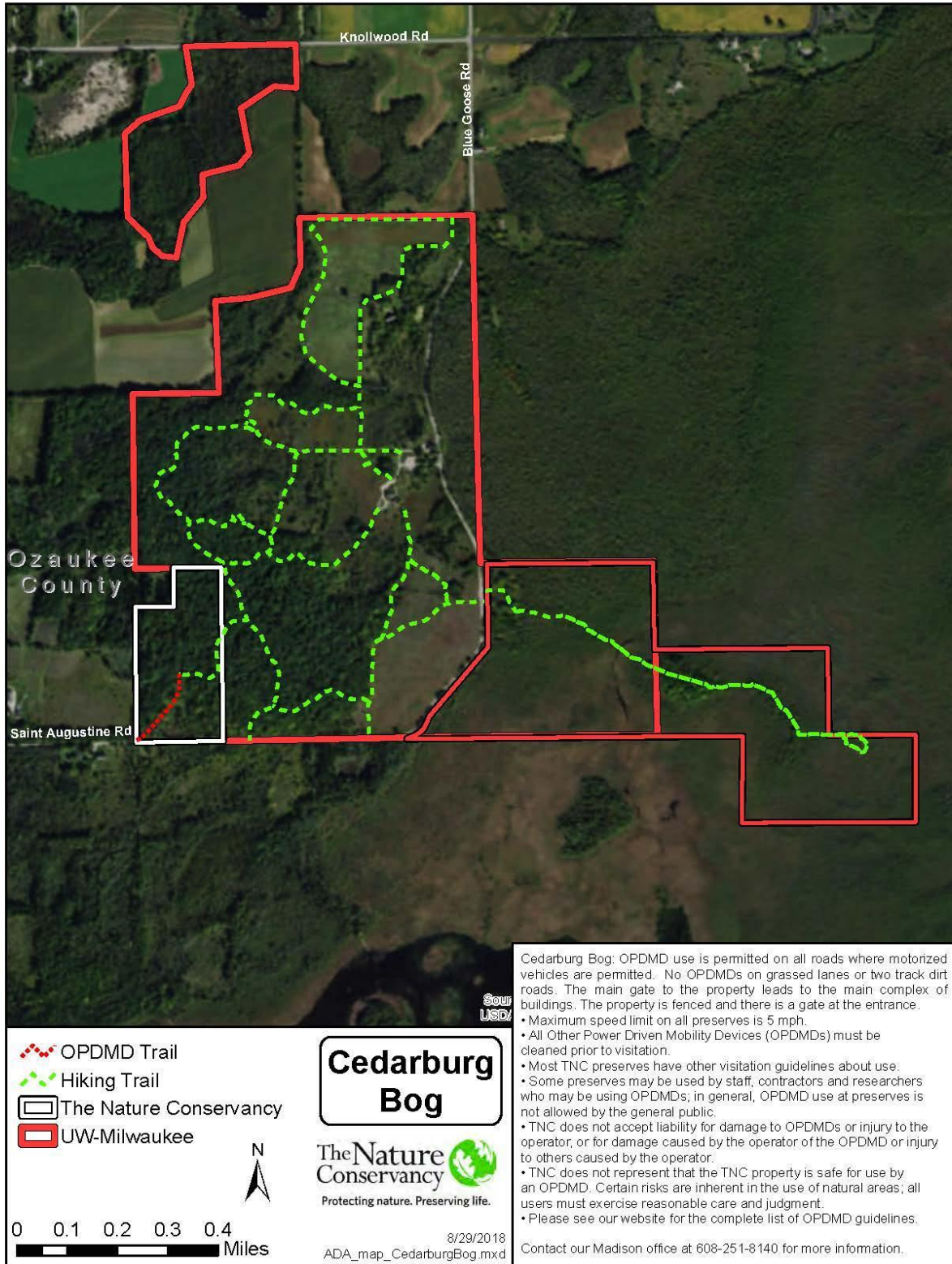
Scale: 0 0.25 0.5 0.75 1 Miles

8/29/2018
ADA_map_Wolter.mxd

Caroline Lake Map



Cedarburg Bog Map



OPDMD Trail
 Hiking Trail
 The Nature Conservancy
 UW-Milwaukee

N
 0 0.1 0.2 0.3 0.4 Miles

Cedarburg Bog

The Nature Conservancy
 Protecting nature. Preserving life.

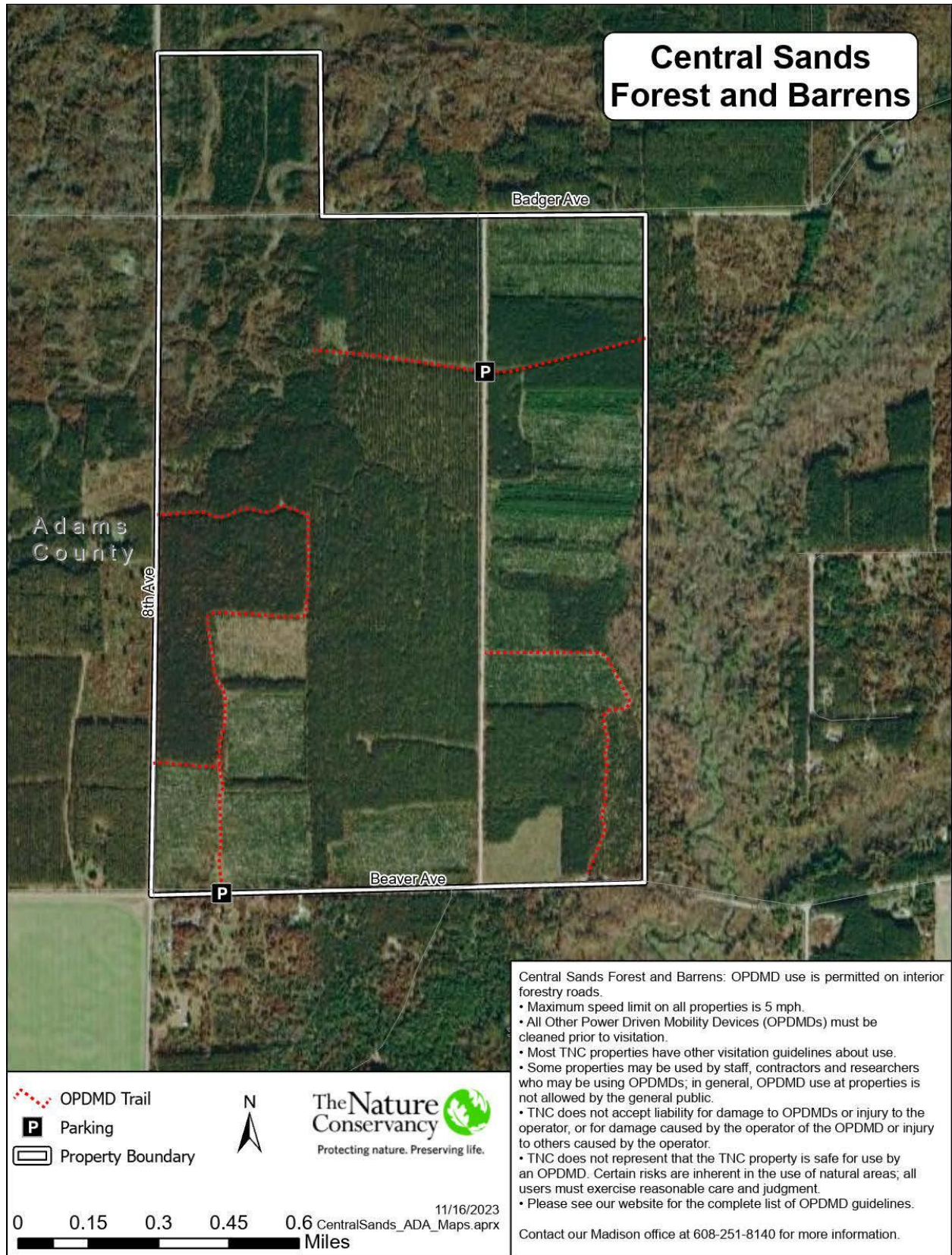
8/29/2018
 ADA_map_CedarburgBog.mxd

Cedarburg Bog: OPDMD use is permitted on all roads where motorized vehicles are permitted. No OPDMDs on grassed lanes or two track dirt roads. The main gate to the property leads to the main complex of buildings. The property is fenced and there is a gate at the entrance.

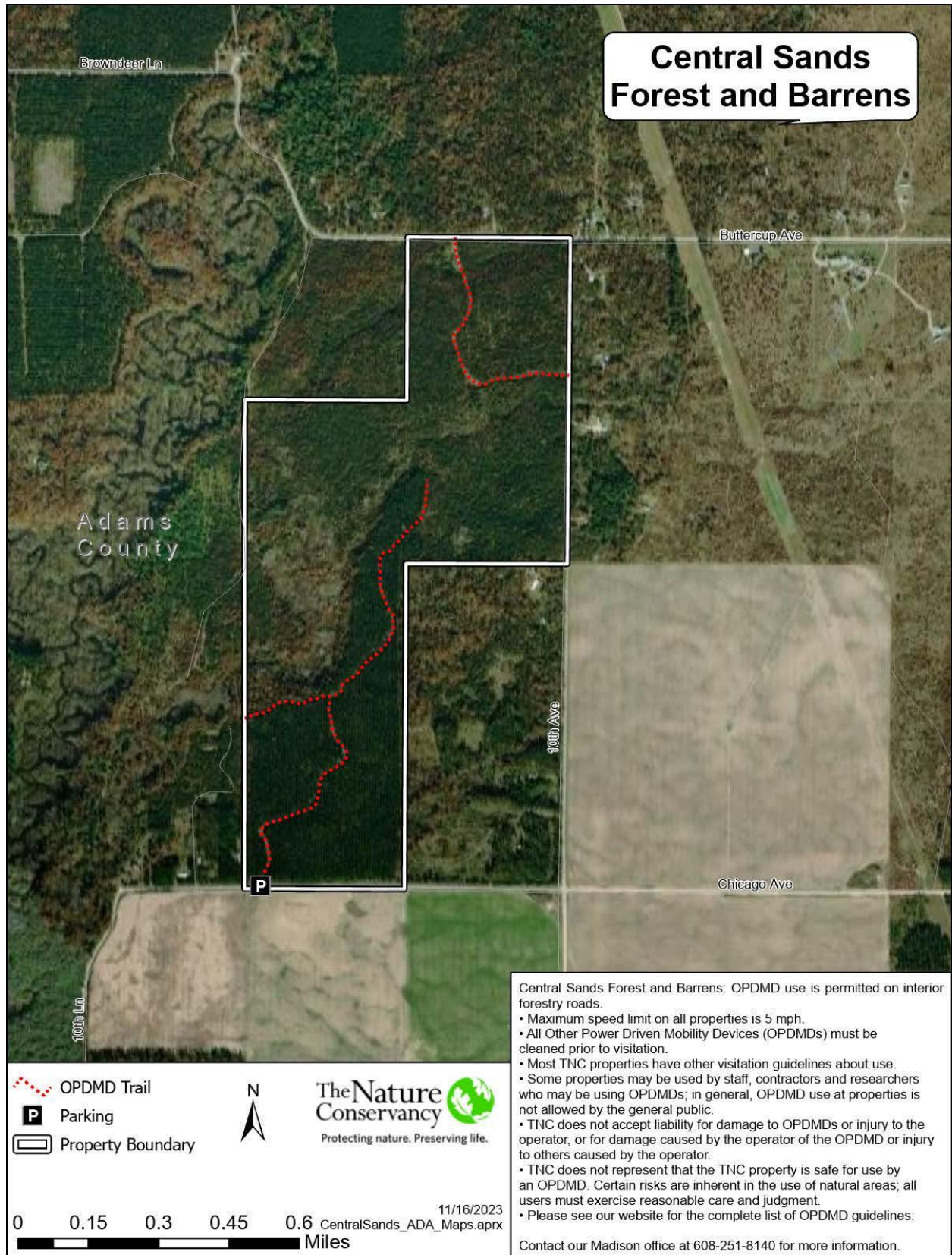
- Maximum speed limit on all preserves is 5 mph.
- All Other Power Driven Mobility Devices (OPDMDs) must be cleaned prior to visitation.
- Most TNC preserves have other visitation guidelines about use.
- Some preserves may be used by staff, contractors and researchers who may be using OPDMDs; in general, OPDMD use at preserves is not allowed by the general public.
- TNC does not accept liability for damage to OPDMDs or injury to the operator, or for damage caused by the operator of the OPDMD or injury to others caused by the operator.
- TNC does not represent that the TNC property is safe for use by an OPDMD. Certain risks are inherent in the use of natural areas; all users must exercise reasonable care and judgment.
- Please see our website for the complete list of OPDMD guidelines.

Contact our Madison office at 608-251-8140 for more information.

Central Sands Map – Beaver Tract






Central Sands Map – Buttercup Tract



**Central Sands
Forest and Barrens**

Adams
County

-  OPDMD Trail
-  Parking
-  Property Boundary



The Nature Conservancy
Protecting nature. Preserving life.

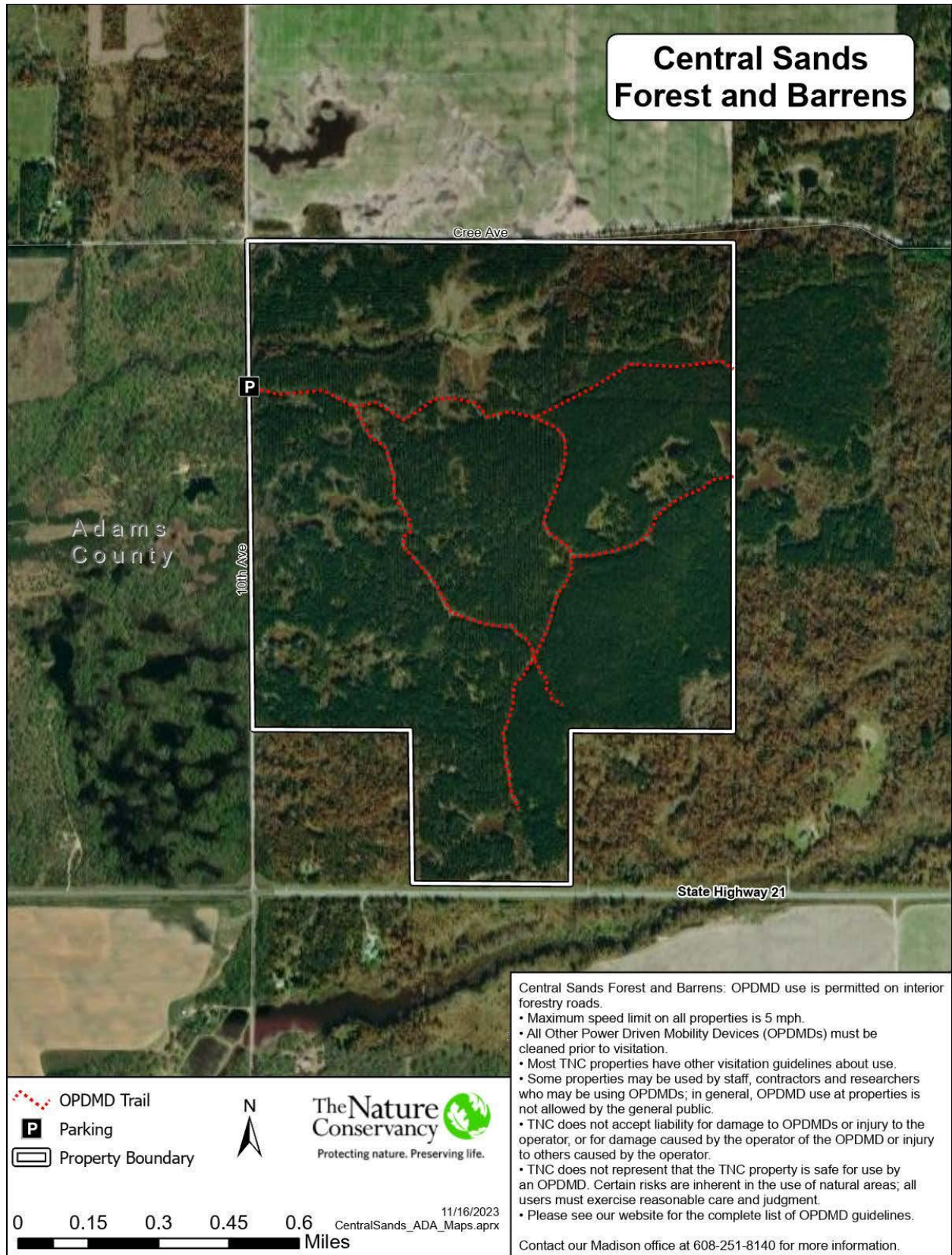
0 0.15 0.3 0.45 0.6 Miles
CentralSands_ADA_Maps.aprx 11/16/2023

Central Sands Forest and Barrens: OPDMD use is permitted on interior forestry roads.

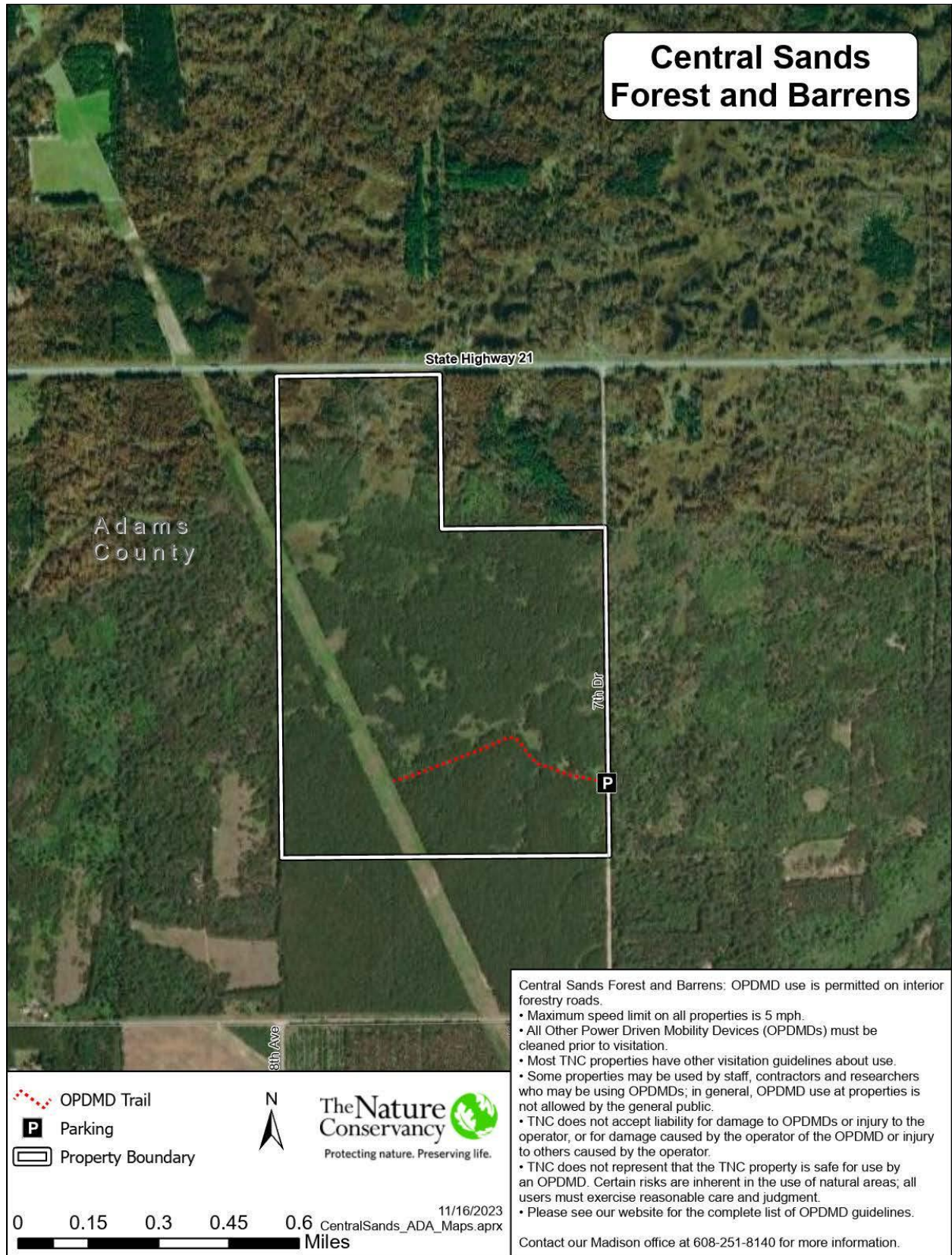
- Maximum speed limit on all properties is 5 mph.
- All Other Power Driven Mobility Devices (OPDMDs) must be cleaned prior to visitation.
- Most TNC properties have other visitation guidelines about use.
- Some properties may be used by staff, contractors and researchers who may be using OPDMDs; in general, OPDMD use at properties is not allowed by the general public.
- TNC does not accept liability for damage to OPDMDs or injury to the operator, or for damage caused by the operator of the OPDMD or injury to others caused by the operator.
- TNC does not represent that the TNC property is safe for use by an OPDMD. Certain risks are inherent in the use of natural areas; all users must exercise reasonable care and judgment.
- Please see our website for the complete list of OPDMD guidelines.

Contact our Madison office at 608-251-8140 for more information.

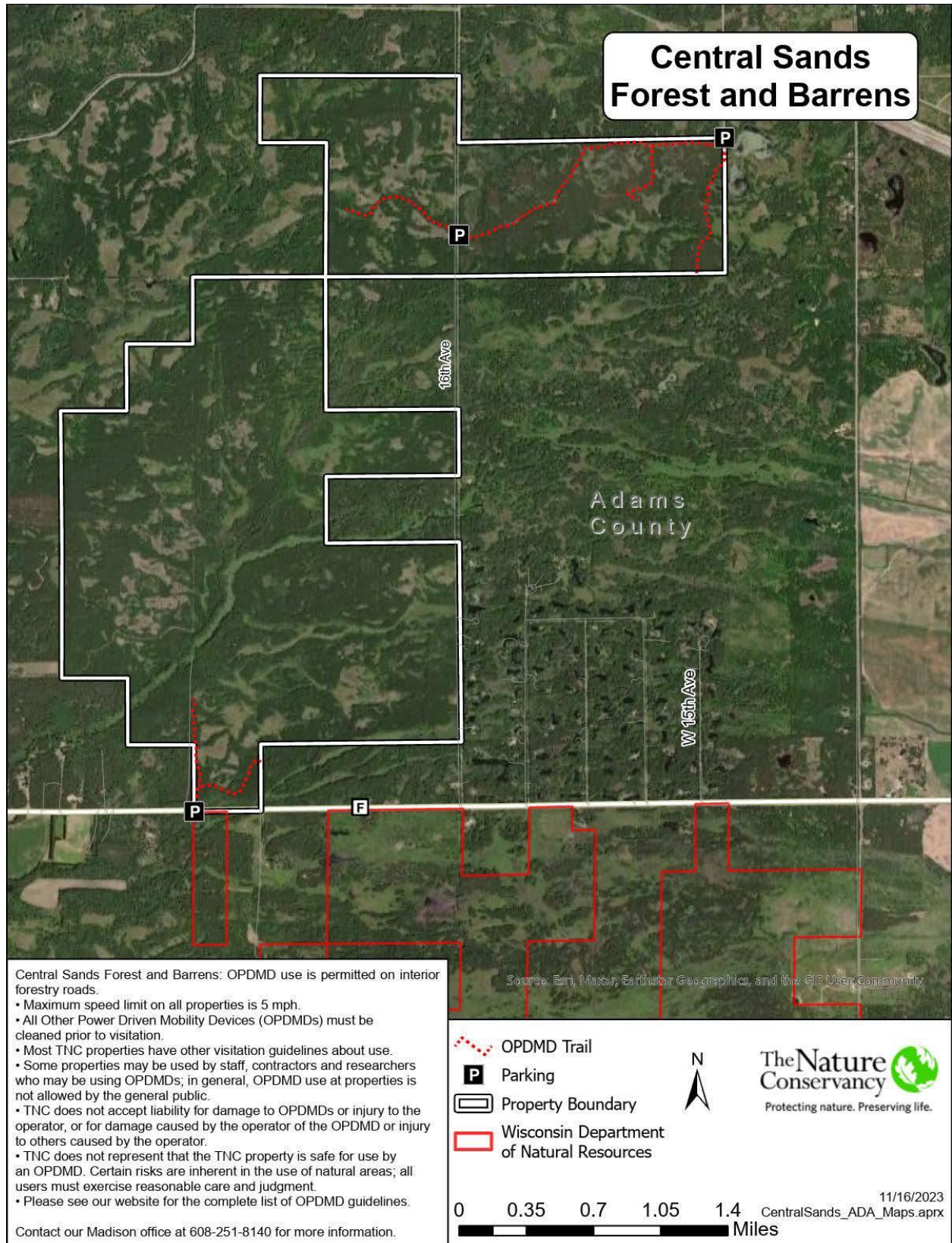
Central Sands Map – Preston North Tract



Central Sands Map – Preston South Tract



Central Sands Map – Quincy Tract



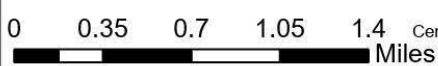
Central Sands Forest and Barrens: OPDMD use is permitted on interior forestry roads.

- Maximum speed limit on all properties is 5 mph.
- All Other Power Driven Mobility Devices (OPDMDs) must be cleaned prior to visitation.
- Most TNC properties have other visitation guidelines about use.
- Some properties may be used by staff, contractors and researchers who may be using OPDMDs; in general, OPDMD use at properties is not allowed by the general public.
- TNC does not accept liability for damage to OPDMDs or injury to the operator, or for damage caused by the operator of the OPDMD or injury to others caused by the operator.
- TNC does not represent that the TNC property is safe for use by an OPDMD. Certain risks are inherent in the use of natural areas; all users must exercise reasonable care and judgment.
- Please see our website for the complete list of OPDMD guidelines.

Contact our Madison office at 608-251-8140 for more information.

Source: Esri, Maxar, Earthstar Geographics, and the GIS User Community

- OPDMD Trail
- Parking
- Property Boundary
- Wisconsin Department of Natural Resources



11/16/2023
CentralSands_ADA_Maps.aprx

Crooked Creek Map



Source: Esri, DigitalGlobe, GeoEye, Earthstar Geographics, CNES/Airbus DS, USDA, USGS, AeroGRID, IGN, and the GIS User Community

Crooked Creek: Use OPDMDs only on main, gravel driveway.

- Maximum speed limit on all preserves is 5 mph.
- All Other Power Driven Mobility Devices (OPDMDs) must be cleaned prior to visitation.
- Most TNC preserves have other visitation guidelines about use.
- Some preserves may be used by staff, contractors and researchers who may be using OPDMDs; in general, OPDMD use at preserves is not allowed by the general public.
- TNC does not accept liability for damage to OPDMDs or injury to the operator, or for damage caused by the operator of the OPDMD or injury to others caused by the operator.
- TNC does not represent that the TNC property is safe for use by an OPDMD. Certain risks are inherent in the use of natural areas; all users must exercise reasonable care and judgment.
- Please see our website for the complete list of OPDMD guidelines.

Contact our Mukwonago office at 262/642-7276 for more information and a gate lock combination.

- OPDMD Trails
- Hiking Trails
- Parking
- Preserve Boundary

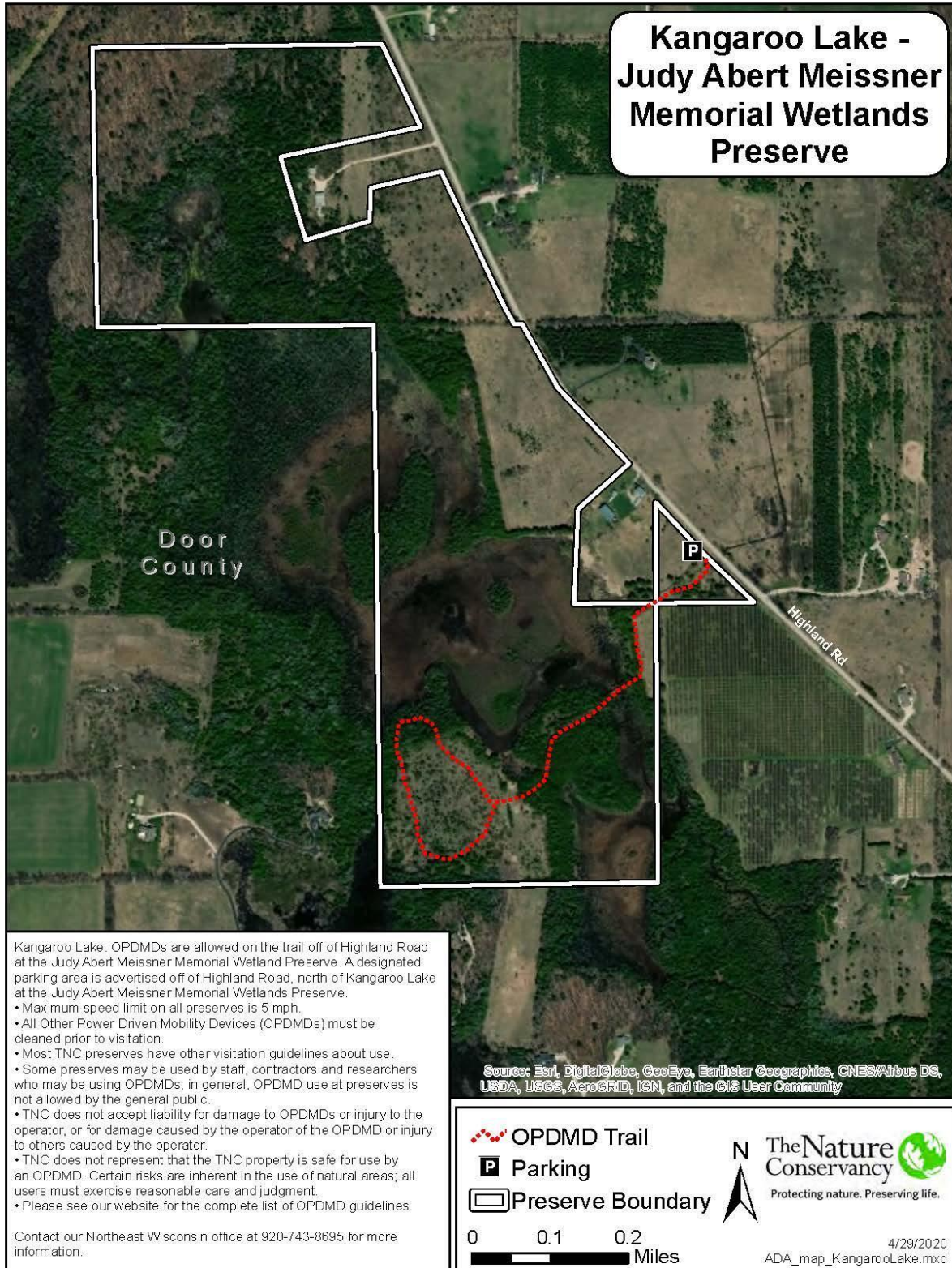
The Nature Conservancy
Protecting nature. Preserving life.

Crooked Creek

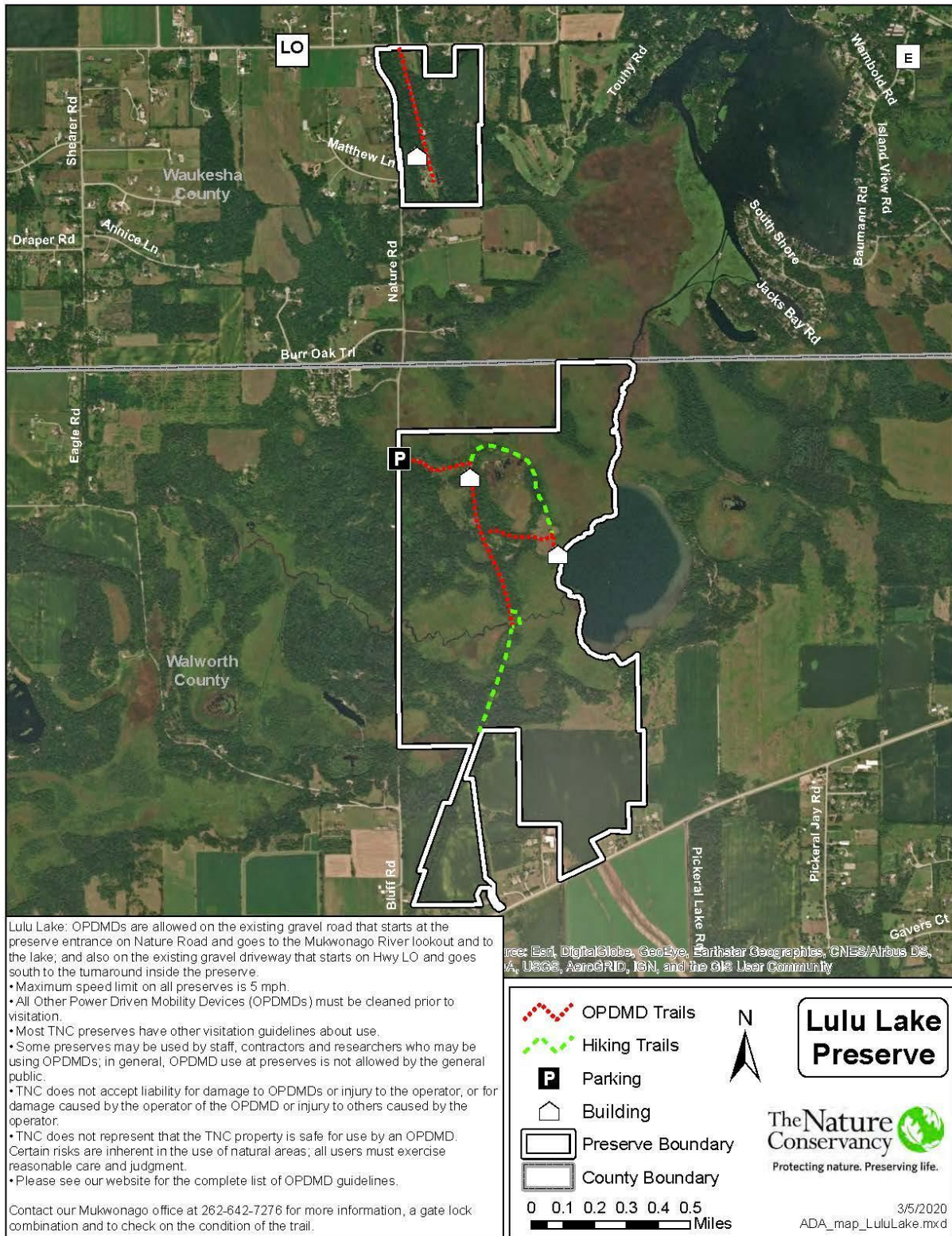
ADA_map_CrookedCreek.mxd
8/29/2018

0 0.1 0.2 0.3
Miles

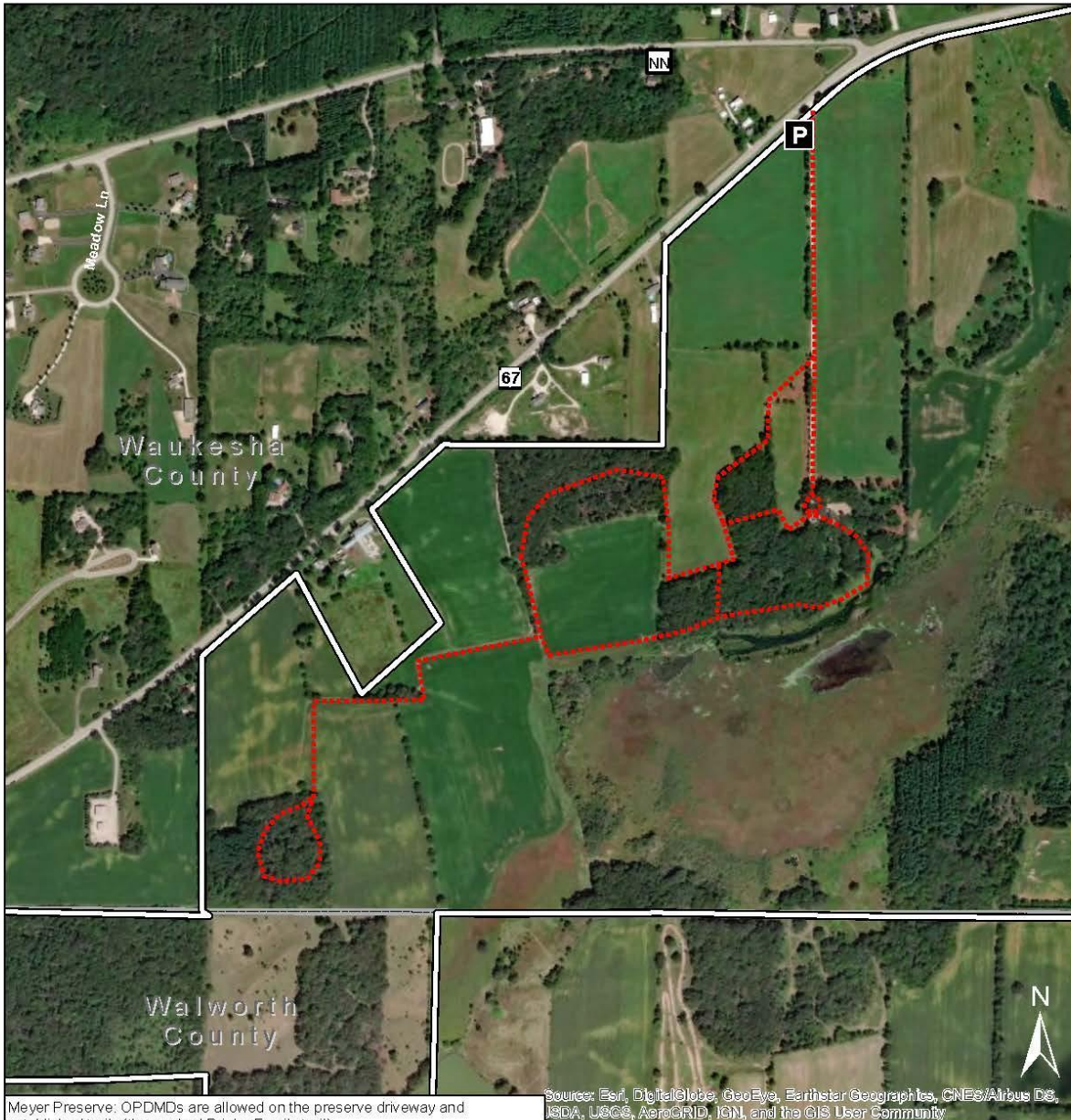
Kangaroo Lake Map



Lulu Lake Map



Newell and Ann Meyer Nature Preserve Map



Source: Esri, DigitalGlobe, GeoEye, Earthstar Geographics, CNES/Airbus DS, USDA, USGS, AeroGRID, IGN, and the GIS User Community

Meyer Preserve: OPDMDs are allowed on the preserve driveway and established trails (the marked Priebe Family trail).

- Maximum speed limit on all preserves is 5 mph.
- All Other Power Driven Mobility Devices (OPDMDs) must be cleaned prior to visitation.
- Most TNC preserves have other visitation guidelines about use.
- Some preserves may be used by staff, contractors and researchers who may be using OPDMDs; in general, OPDMD use at preserves is not allowed by the general public.
- TNC does not accept liability for damage to OPDMDs or injury to the operator, or for damage caused by the operator of the OPDMD or injury to others caused by the operator.
- TNC does not represent that the TNC property is safe for use by an OPDMD. Certain risks are inherent in the use of natural areas; all users must exercise reasonable care and judgment.
- Please see our website for the complete list of OPDMD guidelines.

Contact our Mukwonago office at 262/642-7276 for more information, a gate lock combination and to check on the condition of the trail.

- OPDMD Trails
- Parking
- Preserve Boundary
- County Boundary

Newell and Ann Meyer Nature Preserve

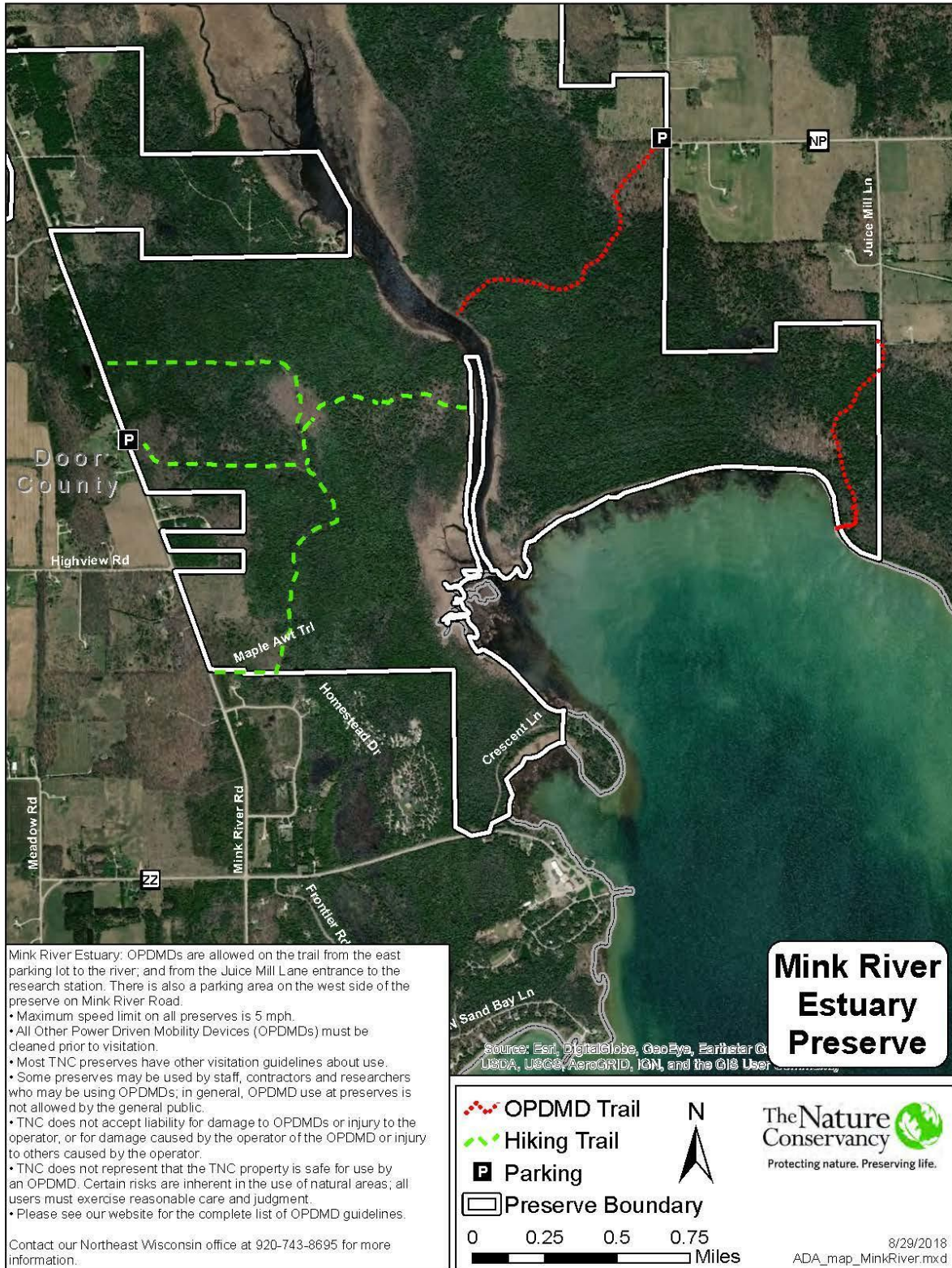
The Nature Conservancy

Protecting nature. Preserving life.

0 0.1 0.2 0.3 0.4 Miles

8/29/2018
ADA_map_Meyer.mxd

Mink River Map



Mink River Estuary: OPDMDs are allowed on the trail from the east parking lot to the river, and from the Juice Mill Lane entrance to the research station. There is also a parking area on the west side of the preserve on Mink River Road.

- Maximum speed limit on all preserves is 5 mph.
- All Other Power Driven Mobility Devices (OPDMDs) must be cleaned prior to visitation.
- Most TNC preserves have other visitation guidelines about use.
- Some preserves may be used by staff, contractors and researchers who may be using OPDMDs; in general, OPDMD use at preserves is not allowed by the general public.
- TNC does not accept liability for damage to OPDMDs or injury to the operator, or for damage caused by the operator of the OPDMD or injury to others caused by the operator.
- TNC does not represent that the TNC property is safe for use by an OPDMD. Certain risks are inherent in the use of natural areas; all users must exercise reasonable care and judgment.
- Please see our website for the complete list of OPDMD guidelines.

Contact our Northeast Wisconsin office at 920-743-8695 for more information.

Mink River Estuary Preserve

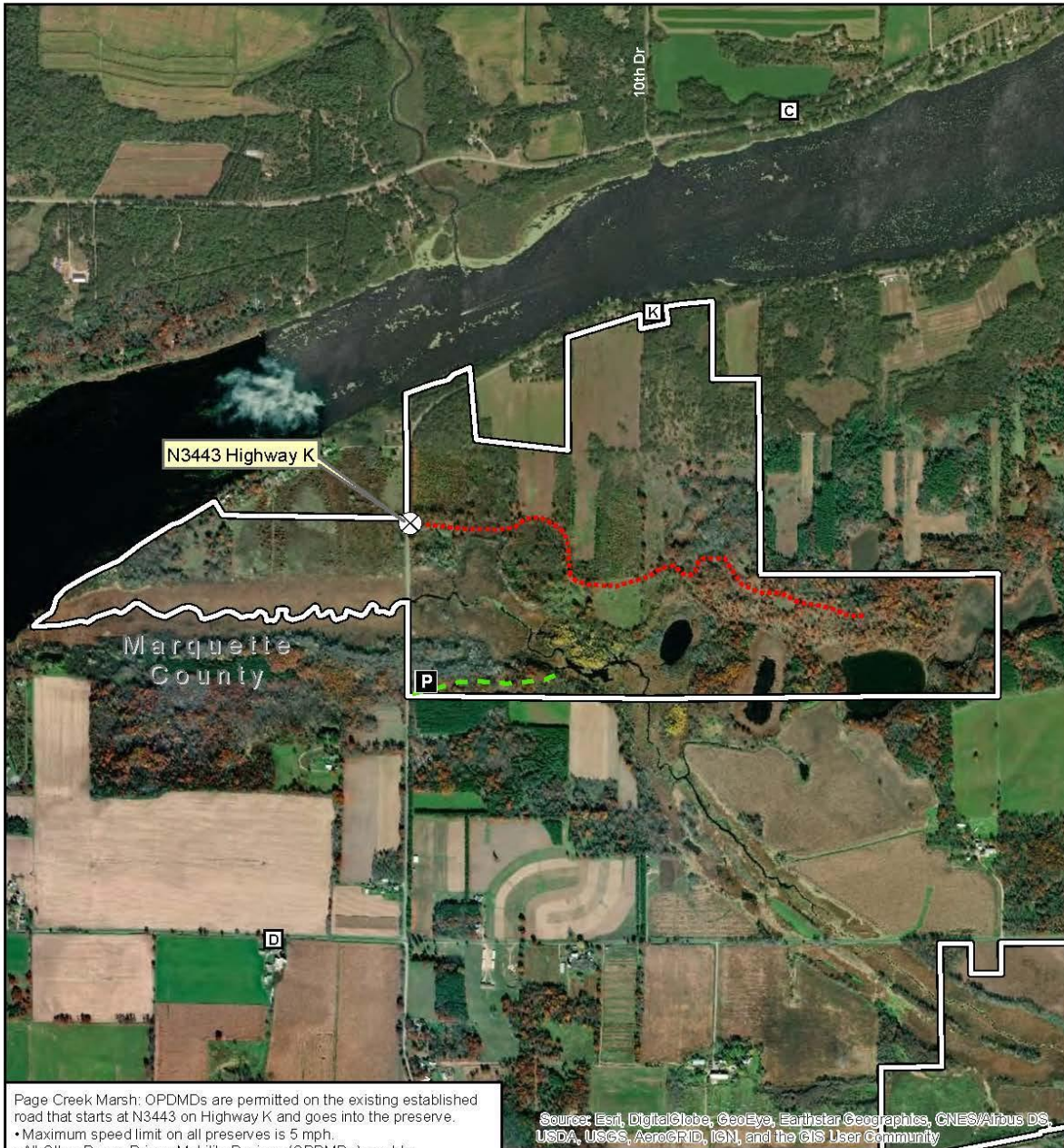
⋯ OPDMD Trail
- - - Hiking Trail
P Parking
 Preserve Boundary

0 0.25 0.5 0.75 Miles



8/29/2018
ADA_map_MinkRiver.mxd

Page Creek Marsh Map



- Page Creek Marsh: OPDMDs are permitted on the existing established road that starts at N3443 on Highway K and goes into the preserve.
- Maximum speed limit on all preserves is 5 mph.
 - All Other Power Driven Mobility Devices (OPDMDs) must be deaned prior to visitation.
 - Most TNC preserves have other visitation guidelines about use.
 - Some preserves may be used by staff, contractors and researchers who may be using OPDMDs; in general, OPDMD use at preserves is not allowed by the general public.
 - TNC does not accept liability for damage to OPDMDs or injury to the operator, or for damage caused by the operator of the OPDMD or injury to others caused by the operator.
 - TNC does not represent that the TNC property is safe for use by an OPDMD. Certain risks are inherent in the use of natural areas; all users must exercise reasonable care and judgment.
 - Please see our website for the complete list of OPDMD guidelines.

Contact our Madison office at 608-251-8140 for more information and a gate lock combination.

- OPDMD Trail
- Hiking Trail
- Access Gate
- Parking
- Preserve Boundary

Page Creek Marsh

The Nature Conservancy

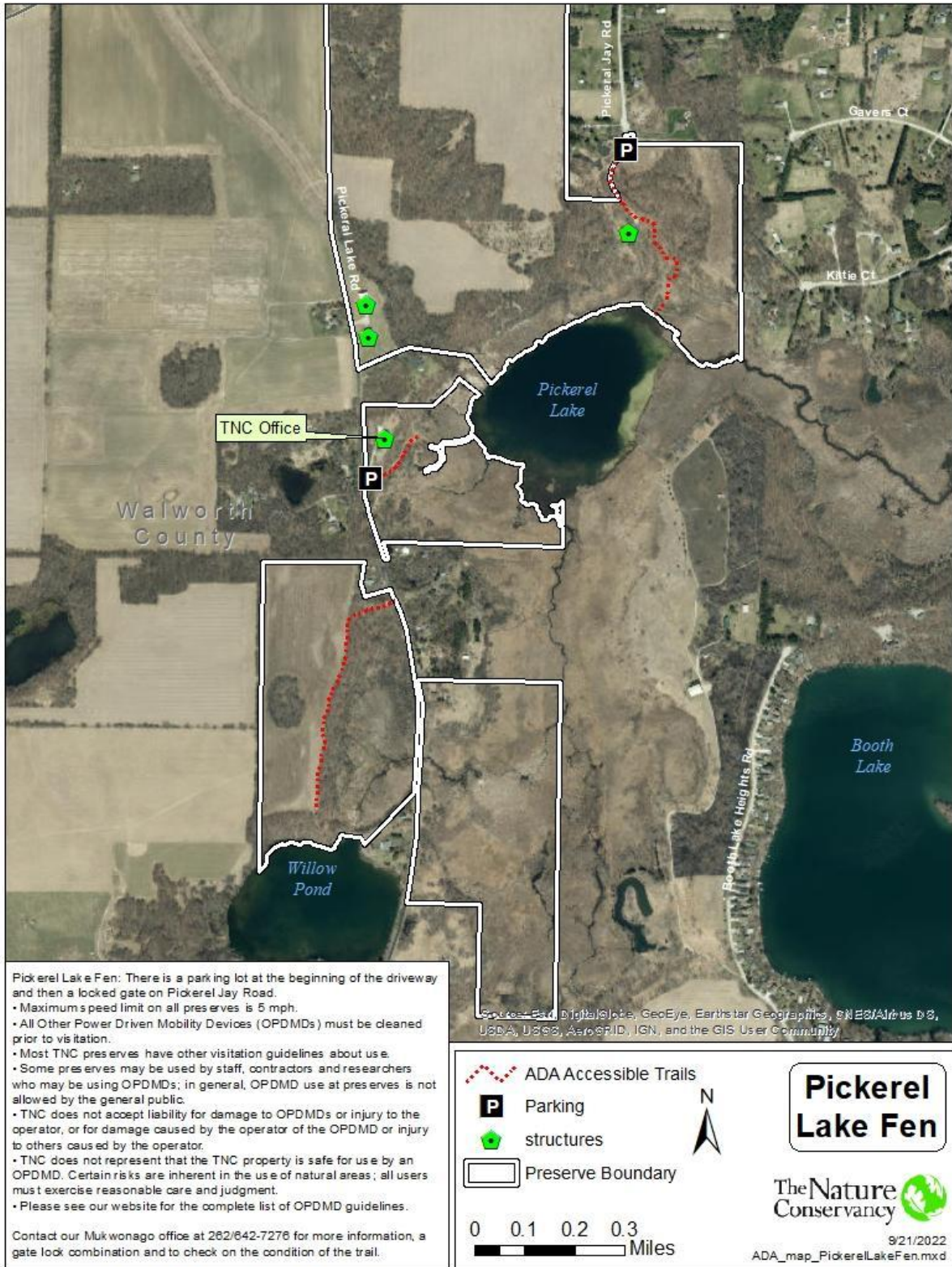
Protecting nature. Preserving life.

8/29/2018
ADA_map_PageCreek.mxd

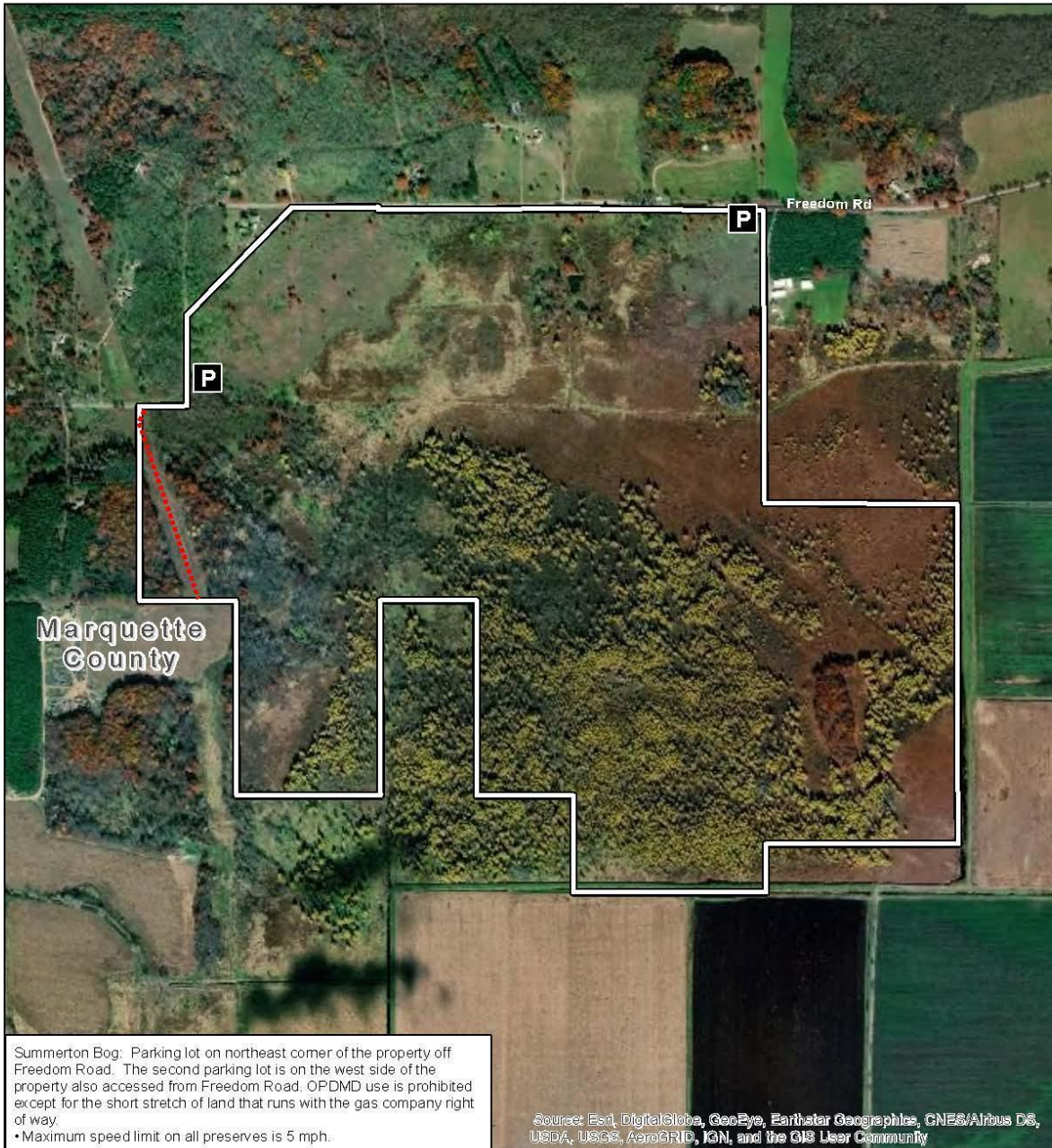
0 0.2 0.4 0.6

Miles

Pickerel Lake Fen Map



Summerton Bog Map



Summerton Bog: Parking lot on northeast corner of the property off Freedom Road. The second parking lot is on the west side of the property also accessed from Freedom Road. OPDMD use is prohibited except for the short stretch of land that runs with the gas company right of way.

- Maximum speed limit on all preserves is 5 mph.
- All Other Power Driven Mobility Devices (OPDMDs) must be cleaned prior to visitation.
- Most TNC preserves have other visitation guidelines about use.
- Some preserves may be used by staff, contractors and researchers who may be using OPDMDs; in general, OPDMD use at preserves is not allowed by the general public.
- TNC does not accept liability for damage to OPDMDs or injury to the operator, or for damage caused by the operator of the OPDMD or injury to others caused by the operator.
- TNC does not represent that the TNC property is safe for use by an OPDMD. Certain risks are inherent in the use of natural areas; all users must exercise reasonable care and judgment.
- Please see our website for the complete list of OPDMD guidelines.

Contact our Madison office at 608-251-8140 for more information.

Source: Esri, DigitalGlobe, GeoEye, Earthstar Geographics, CNES/Airbus DS, USDA, USGS, AeroGRID, IGN, and the GIS User Community

- OPDMD Trail
- Parking
- Preserve Boundary

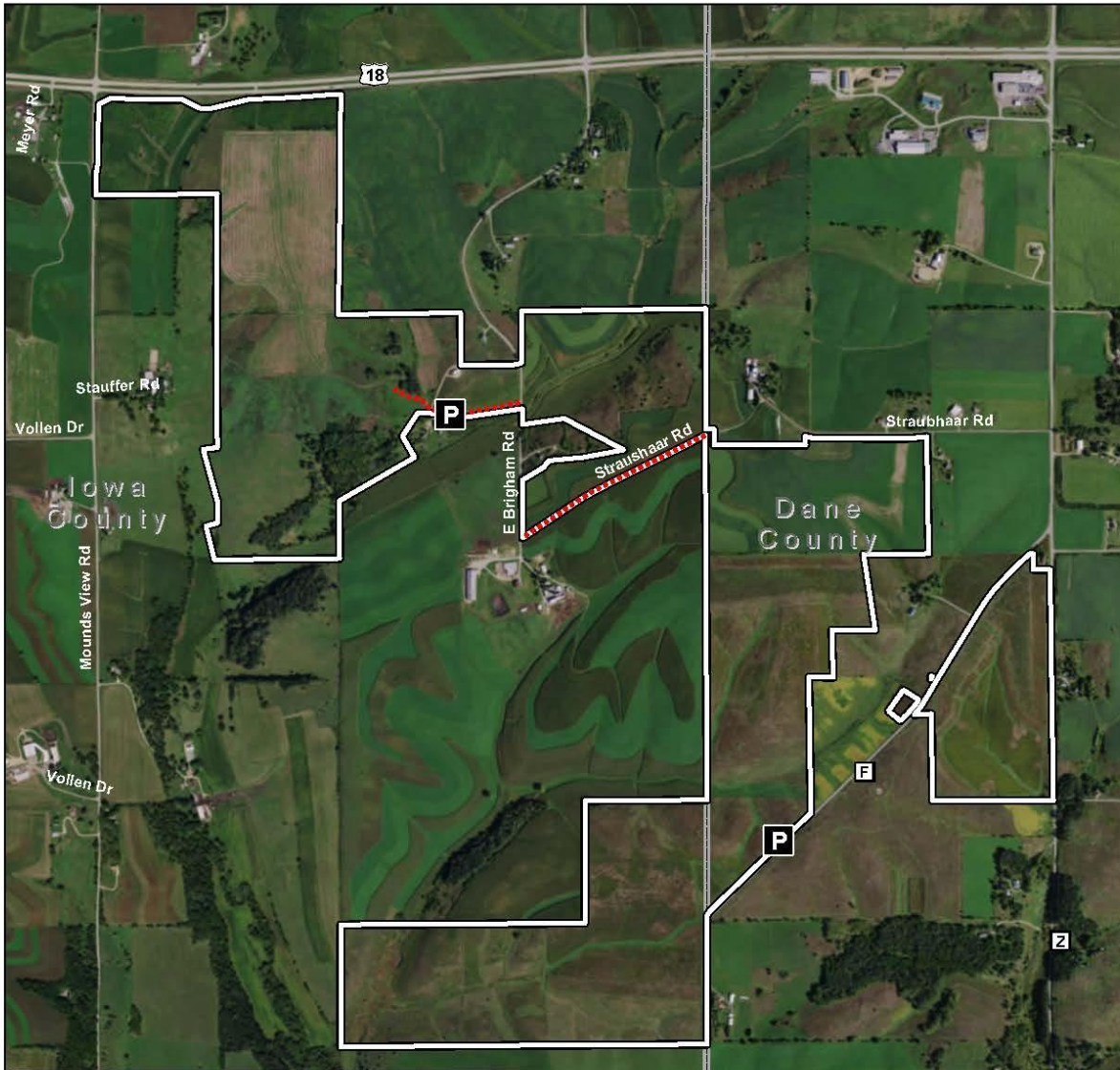
Summerton Bog

The Nature Conservancy
Protecting nature. Preserving life.

10/29/2018
ADA_map_SummertonBog.mxd

0 0.1 0.2 0.3 0.4 Miles

Thomson Memorial Prairie Map



Thomson Memorial Prairie: OPDMDs are allowed on established farm lanes and maintained mowed paths. The official preserve entrance is located on Hwy F where we have a small parking area and an informational sign. There is a second preserve entrance and designated parking area off East Brigham Road.

- Maximum speed limit on all preserves is 5 mph.
- All Other Power Driven Mobility Devices (OPDMDs) must be cleaned prior to visitation.
- Most TNC preserves have other visitation guidelines about use.
- Some preserves may be used by staff, contractors and researchers who may be using OPDMDs; in general, OPDMD use at preserves is not allowed by the general public.
- TNC does not accept liability for damage to OPDMDs or injury to the operator, or for damage caused by the operator of the OPDMD or injury to others caused by the operator.
- TNC does not represent that the TNC property is safe for use by an OPDMD. Certain risks are inherent in the use of natural areas; all users must exercise reasonable care and judgment.
- Please see our website for the complete list of OPDMD guidelines.

Contact our Madison office at 608-251-8140 for more information and a gate lock combination.

Source: Esri, DigitalGlobe, GeoEye, Earthstar Geographics, CNES/Airbus DS, USDA, USGS, AeroGRID, IGN, and the GIS User Community

- OPDMD Trail
- Parking
- Preserve Boundary
- County Boundary

Thomson Memorial Prairie

The Nature Conservancy

Protecting nature. Preserving life.

8/29/2018
ADA_map_Thompson.mxd

0 0.25 0.5 0.75 Miles