



# A VISION FOR LOUISIANA

The Nature Conservancy envisions a Louisiana with a livable climate, healthy communities, and thriving nature. We are advancing a statewide vision that will serve as a cornerstone for landscape-scale conservation for Louisiana.

## Designing a Resilient Louisiana

*GOAL: Revive Freshwater Flows*

We identify precisely where and when freshwater systems can be improved to support nature, protect communities, and preserve our culture. Our plan has three parts:

- Restore floodplains
- Implement nature-based solutions
- Design river management strategies

## Enhance Shared Spaces

*GOAL: Expand Access & Amount of Public Spaces*

We work with partners to protect over 3 million acres of public land. Now is the time to stitch together and expand these locations to improve wildlife migration corridors and increase human access. Our plan has three parts:

- Establish new public parks and federal reserves
- Secure permanent state appropriated conservation funding
- Restore tree canopies impacted from hurricanes

## Keep Our Promise

*GOAL: Protect Nature for People & Wildlife*

We protect and manage over 45,000 acres across Louisiana. We will continue to identify and conserve high priority lands that will serve as examples of how habitat restoration can be replicated statewide. Our plan has three parts:

- Expand restoration at preserves
- Provide access to nature
- Protect rare and endangered species

## Renew Responsibly

*GOAL: Advance Responsible Practices for Renewable Energy*

We understand a diverse energy portfolio is necessary for the future. Bringing wind and solar energy to LA is necessary but must be done responsibly. With wind and solar still in development in LA, our primary goal is:

- Lead the development of a plan to maximize benefits from solar and wind energy while reducing impacts to the environment

# Kisatchie to the Coast

**GOAL: An anchor of diversity in Southwest Louisiana**

We know that restoring biodiversity and combating climate change requires innovative and landscape-scale change. Our Kisatchie to the Coast initiative will design and implement a robust network of protected natural lands across Southwestern Louisiana including coastal prairies and longleaf pine. This vital but imperiled region is often overlooked for conservation.

Our program has 3 parts:

- Protect imperiled habitats
- Improve connections along river corridors
- Implement oyster reef restoration

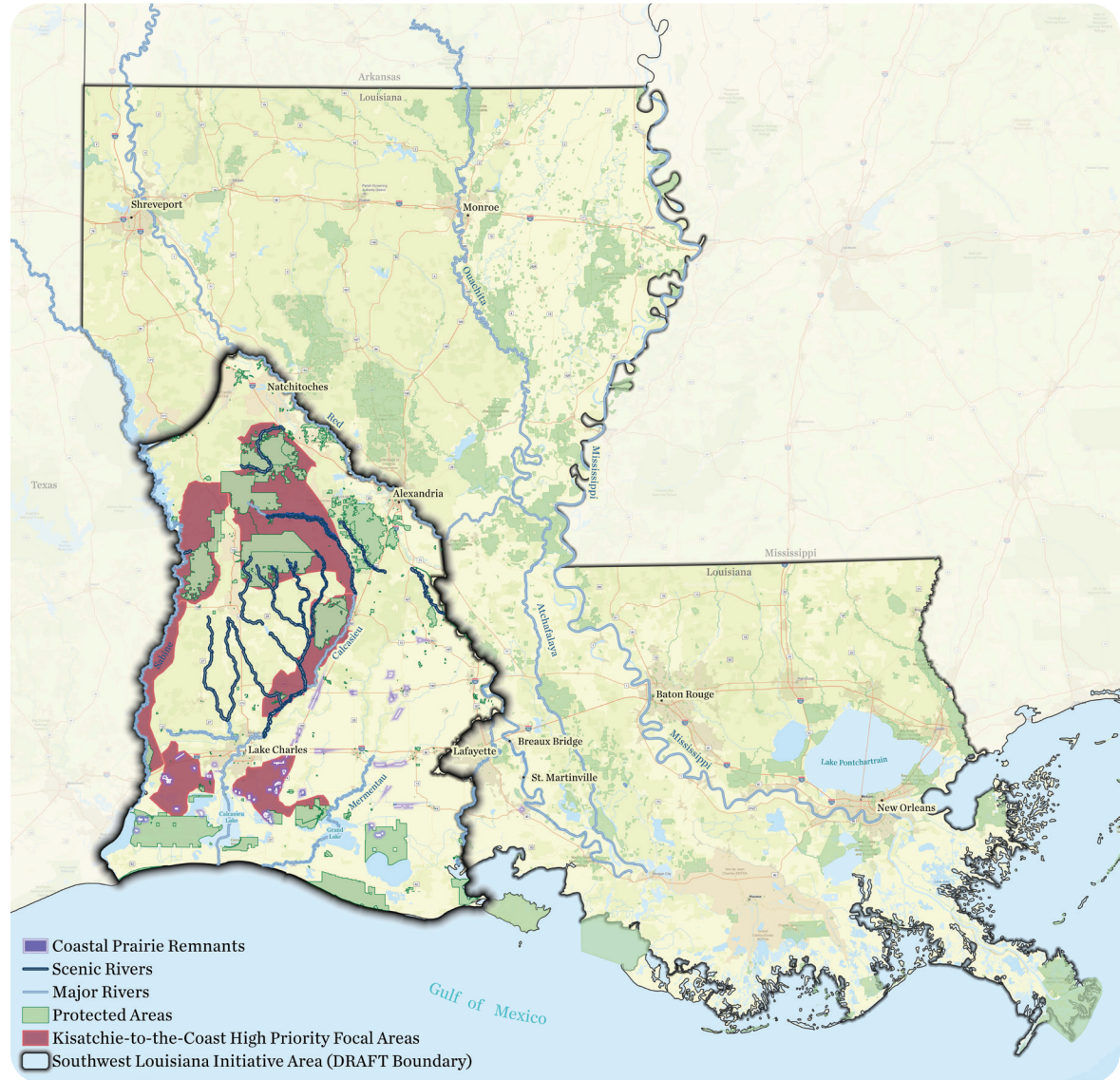
## Coastal Prairies

Between the cheniers, oyster reefs, and marshes that protect the coast to the pine forests that make up the Kisatchie National Forest, there once existed over 3 million acres of hyper-diverse coastal prairies.

But decades of destructive land use practices have all but decimated this habitat that serves as a biodiversity hot spot and is one of the largest migratory corridors on the planet.

Sea level rise continues to threaten existing conservation areas along the coast, making the need to secure and restore inland coastal prairie habitat more important than ever.

We will bring together stakeholders to stitch back together wide swaths of coastal prairie habitat.



## Help Make this Vision a Reality

When you think about the legacy you want to leave for your children and grandchildren, what better gift could you give than a healthy, thriving Louisiana?

To Invest in Louisiana's Future, Contact:  
Celeste Richard, Director of Development  
Email: [celeste.richard@tnc.org](mailto:celeste.richard@tnc.org)  
Phone: (225) 338-1040